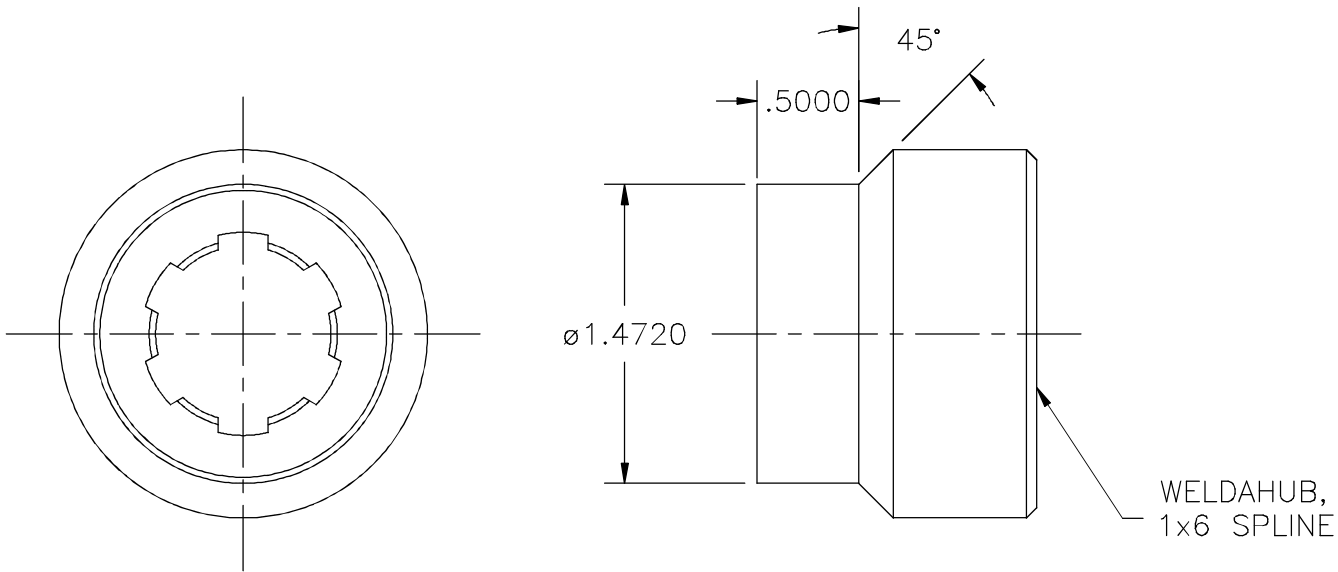


This drawing contains confidential proprietary information of Triple C, Inc. and is subject to return upon request. The furnishing of this drawing is not to be construed as the grant of any license, express or implied, to manufacture, have manufactured, use or sell the structures shown hereon.



REV A: ELIMINATED RELIEF CUT AND
CHAMFER ON LEFT SIDE 10/13/05

CA

TRIPLE C
INC.

P.O. BOX 248, SABETHA, KS 66534
(785) 284-3674 FAX (785) 284-3931

TOLERANCES <small>Unless otherwise specified</small> XX .010 XXX .005 XXXX .0005 X/X 1/32 ANGLE 0°30'	SHEET __ OF __	SCALE: NTS	DRAWN BY: CEDRIC HEINIGER 04/08/96
	TITLE: AUGER HUB		
	ASSEMBLY NUMBER: HF12-26		DRAWING NUMBER: 30-2211